



833—24 OZ.—1.50



803—HONEY JAR W/LID—1.50



8—24 OZ.—1.50



831—16 OZ.—1.50



835—24 OZ.—1.50



7JH—AZTEC BOTTLE W/LID—2.00
7JH—AZTEC BOTTLE 24 OZ.—1.50

JUGS FOR HONEY—SYRUP—SALAD DRESSING, ETC.—WITH CORKS.



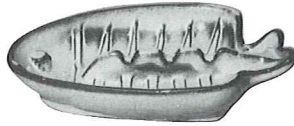
504—SUGAR 2"—.65



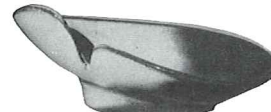
553—CREAMER 2"—.65



167—HORSE SHOE—.65



T8—FISH—7"—1.00



466—FREE FORM—7"—1.00



467—FREE FORM ASHTRAY—.65



510—SUGAR 2"—.65



560—CREAMER 2"—.65



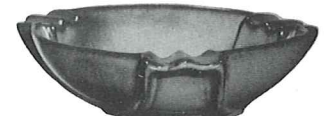
513—CLOVER LEAF 3"—.65



512—MINIATURE LEAF 4"—.65



468—FISH ASHTRAY 4"—.65



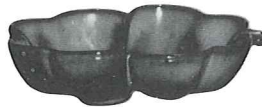
458—ROUND ASHTRAY—2.00



550—PITCHER 2"—.65



555—PITCHER 2"—.65



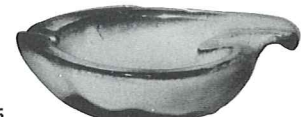
223—6" CLOVER LEAF—1.00



463—ARROWHEAD ASHTRAY 4"—.65



472—4" SHELL—.65



452—FREE FORM—7"—1.50



507S—BOOTS ON THONG—1.50



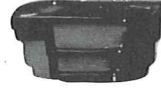
507—BOOT 3"—.65



469—SAFETY ASHTRAY—.75



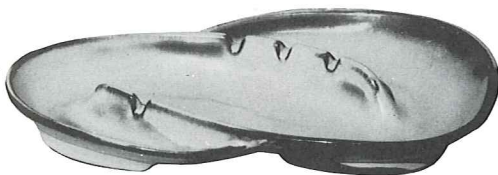
470—AZTEC ASHTRAY 3½"—.65



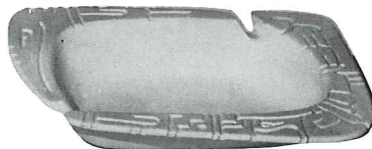
456—ASHTRAY—.75



464—SQUARE—10½"—5.00



F203—TEAR DROP—13½"—3.00



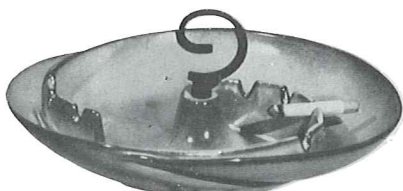
471—AZTEC—9"—2.00



453—ARROW HEAD—7"—1.00



F204—RYTHM ASH TRAY—10"—2.50

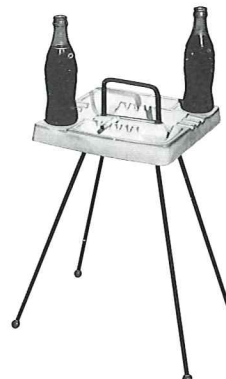


30—WITHOUT HANDLE—3.00 30T—10" ROUND ASH TRAY—3.50

ASH TRAYS



36M—WITH MAGAZINE RACK—8.50



34—10½" SQUARE—7.50



36—12" TRAY ON STAND—7.50

34M—SAME STAND WITH SQUARE TRAY—8.50

34—10½" TRAY ONLY—5.00

36—12" TRAY ONLY—5.00

THIS PAGE AVAILABLE IN ALL COLORS, BLACK & WHITE.
SIZES ARE APPROXIMATE AND MAY VARY SLIGHTLY.

FOR SMOKERS AND SNACKERS, ANYWHERE: WITH REFRESHMENT CORNERS: ON STURDY WROUGHT IRON.